

# XE75DA

**NEW  
PRODUCT**

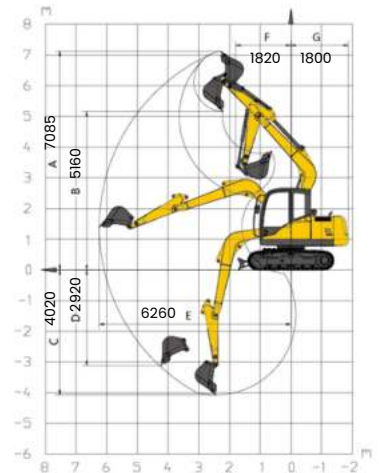
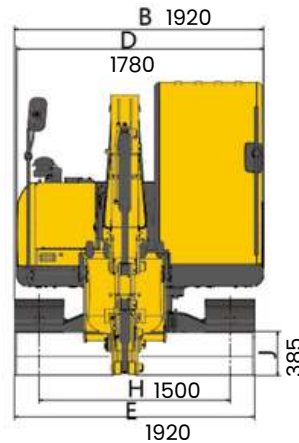
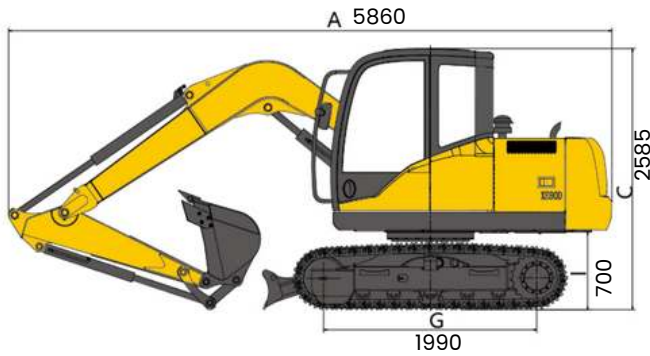


<b>Engine Model</b>	<b>: Kubota V2607</b>
<b>Rated Power</b>	<b>: 42.4 kW</b>
<b>Operational Weight</b>	<b>: 7460 kg</b>
<b>Rated Bucket Cap.</b>	<b>: 0.3 m<sup>3</sup></b>
<b>Rated Speed</b>	<b>: 2000 rpm</b>
<b>Swing Speed</b>	<b>: 10 rpm</b>

### **Workshop :**

Pergudangan SiRIE Blok Q-72  
Jl. Raya Lingkar Timur KM 5.5  
Rangkah Kidul, Sidoarjo  
No. Telp : (031) - 99729729

# APPEARANCE



# SPECIFICATION

Description		Specification	Units
<b>Operating Weight</b>		<b>7460</b>	<b>kg</b>
<b>Bucket Capacity</b>		<b>0.3</b>	<b>m<sup>3</sup></b>
<b>Engine</b>	<b>Model</b>	<b>V2607-DI-TE3B</b>	
	<b>No. of Cylinders</b>	<b>4</b>	
	<b>Rated Power</b>	<b>42.4 / 2000</b>	<b>kW / rpm</b>
	<b>Maximum Torque / Speed</b>	<b>222.5 / 1600</b>	<b>N.m / rpm</b>
	<b>Displacement</b>	<b>2.615</b>	<b>L</b>
<b>Main Performance</b>	<b>Travel Speed (H/L)</b>	<b>5.4 / 2.9</b>	<b>km/h</b>
	<b>Swing Speed</b>	<b>10</b>	<b>r/min</b>
	<b>Gradeability</b>	<b>≤ 35</b>	<b>°</b>
	<b>Ground Pressure</b>	<b>33.5</b>	<b>kN</b>
	<b>Bucket Digging Force</b>	<b>57</b>	<b>kN</b>
	<b>Arm Digging Force</b>	<b>38</b>	<b>kN</b>
	<b>Maximum Tractive Force</b>	<b>68.3</b>	<b>kN</b>
<b>Hydraulic System</b>	<b>Rated Flow of Main Pump</b>	<b>160</b>	<b>L/min</b>
	<b>Main Safety Valve Pressure</b>	<b>26.5</b>	<b>MPa</b>
	<b>Travel System Pressure</b>	<b>26.5</b>	<b>MPa</b>
	<b>Swing System Pressure</b>	<b>18.6</b>	<b>MPa</b>
	<b>Pilot System Pressure</b>	<b>3.5</b>	<b>MPa</b>
<b>Oil Capacity</b>	<b>Fuel Tank Capacity</b>	<b>130</b>	<b>L</b>
	<b>Hydraulic Tank Capacity</b>	<b>76</b>	<b>L</b>
	<b>Engine Oil Capacity</b>	<b>10</b>	<b>L</b>
<b>Standard</b>	<b>Length of Boom</b>	<b>3720</b>	<b>mm</b>
	<b>Length of Arm</b>	<b>1622</b>	<b>mm</b>

Struktur, warna, dan spesifikasi dapat berubah tanpa pemberitahuan.  
Harap hubungi kontak yang tertera untuk informasi lebih lanjut.